



# Public Health Data Systems Task Force

Overview of ONC Health IT Certification Program and  
Relevant Certification Criteria

August 24, 2022



# ONC Certification: The Foundation of Health IT

ONC certification is now the **foundation of the US digital healthcare infrastructure**, covering **400+ health IT products** used by **97% of hospitals** and **over 84% of clinical offices** and required by **numerous federal programs**. Health IT systems regularly certified to keep pace with advances in medicine, technology, and policy.

## ONC Health IT Certification:

- Establishes baseline technical capabilities for interoperability
- Promotes the exchange of electronic health information
- Establishes baseline privacy and security requirements
- Increases transparency in the functionality and use of certified health IT
- Promotes competition and choice in health IT
- Provides baseline assurance that a health IT module will perform clinical care and data exchange functions in accordance with interoperability standards and user-centered design

# Primary Components of the ONC Health IT Certification Program

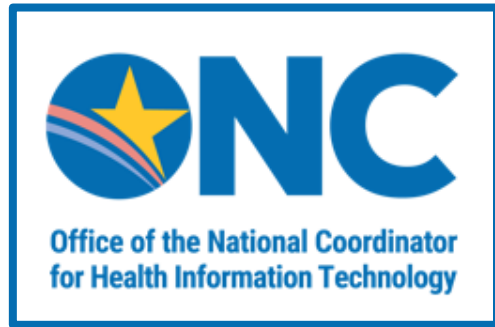
**Certification Criteria** – Roughly 60 criteria across 8 categories of functionality

**Standards Coordination** – Establish US Core Data for Interoperability (USCDI)

**Conditions of Certification** – Six conditions, which are ongoing business and behavioral requirements for certified health IT developers



# How Does ONC Health IT Certification Work?



Notice & Comment  
Rulemaking (Federal  
Regulation)

2015 Edition

Certification  
Criteria

Regulation Requirements

Accreditation Bodies

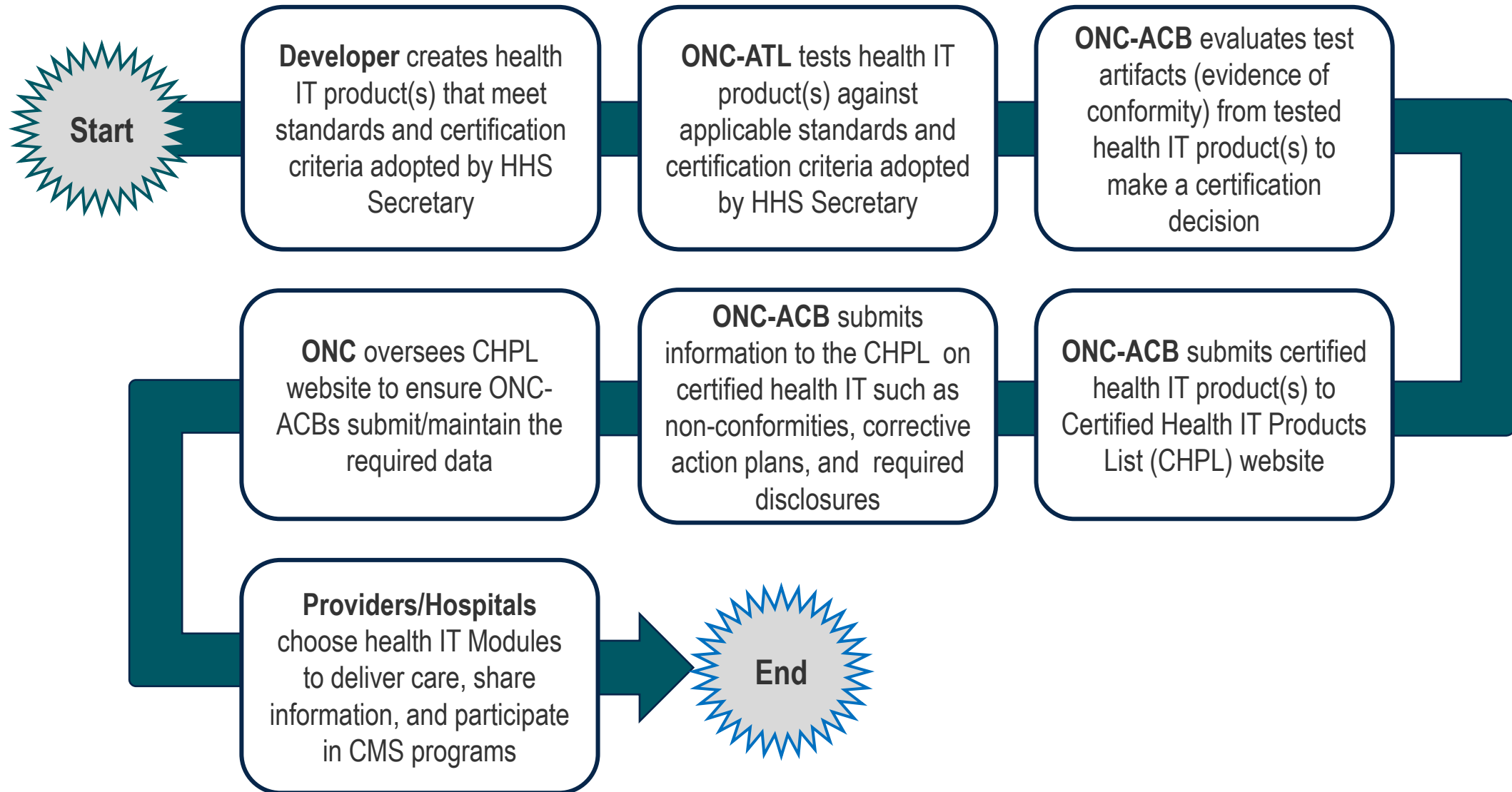
Authorized  
Certification  
Bodies (ACBs)

+

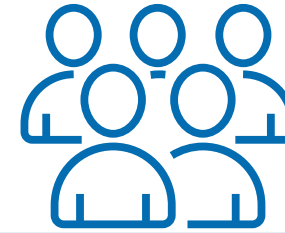
Authorized Testing  
Labs (ATLs)

Program Requirements

# Testing and Certification Process



# Public Health Reporting Criteria



Criterion Citation	Criterion Name
<a href="#">§ 170.315(f)(1)</a>	<a href="#">Transmission to immunization registries</a>
<a href="#">§ 170.315(f)(2)</a>	<a href="#">Transmission to public health agencies — syndromic surveillance</a>
<a href="#">§ 170.315(f)(3)</a>	<a href="#">Transmission to public health agencies — reportable laboratory tests and value/results</a>
<a href="#">§ 170.315(f)(4)</a>	<a href="#">Transmission to cancer registries</a>
<a href="#">§ 170.315(f)(5)</a>	<a href="#">Transmission to public health agencies — electronic case reporting</a>
<a href="#">§ 170.315(f)(6)</a>	<a href="#">Transmission to public health agencies — antimicrobial use and resistance reporting</a>
<a href="#">§ 170.315(f)(7)</a>	<a href="#">Transmission to public health agencies — health care surveys</a>

All criteria point to specific standards and implementation guides and are eligible for SVAP

# Test Tooling

- NIST hosts test tools for 5 of the 7 ONC public health criteria where visual demonstration to specified standards is required
  - [HL7 CDA Cancer Registry Reporting Validation Tool](#)
  - [HL7v2 Immunization Test Suite](#)
  - [HL7v2 Syndromic Surveillance Test Suite](#)
  - [HL7v2 Electronic Laboratory Reporting \(ELR\) Validation Tool \(2014 and 2015 Edition\)](#)
  - [HL7 CDA National Health Care Surveys Validator](#)
- CDC hosts the AU/AR tool (based on HL7 standard) for § 170.315(f)(6)
  - [NHSN Data Validation Tool for AUR](#)
- Currently, electronic case reporting (§ 170.315(f)(5)) does not have a test tool and is demonstrated through self-attestation conformance method



# Existing Public Health Criteria

- (f)-criteria **Do**
  - Represent report generation and transmission functionalities
  - Require Health IT Modules to adhere to specific standards and implementation guides
  - Provide assurances that the Health IT Module (aka “the product”) performs as intended
- (f)-criteria **Do Not**
  - Cover all functionalities that may be of interest
    - Immunization Integration Partnership (an ONC-Authorized alternative test method (ATM))
  - Certify data quality
  - Certify the entity or organization using the technology







# Questions



## Contact ONC

Jeffery Smith, M.P.P.  
Deputy Division Director,  
Certification & Testing Division  
Office of Technology  
Office of the National Coordinator for Health IT  
[Jeffery.Smith@hhs.gov](mailto:Jeffery.Smith@hhs.gov)



**Phone:** 202-690-7151



**Health IT Feedback Form:**  
<https://www.healthit.gov/form/healthit-feedback-form>



**Twitter:** [@onc\\_healthIT](https://twitter.com/onc_healthIT)



**LinkedIn:** [Office of the National Coordinator for Health Information Technology](#)



**Youtube:**  
<https://www.youtube.com/user/HHSONC>

---

**HealthIT.gov**

Subscribe to our weekly eblast  
at [healthit.gov](https://www.healthit.gov) for the latest updates!





# Extra Slides

# ONC's 2015 Edition Has Roughly 60 Criteria Across 8 Categories

The Office of the National Coordinator for Health Information Technology

## Understanding Certified Health IT

Browse criteria by clicking an icon from the wheel. →

**Interoperability**  
is essential for systems to communicate

ONC Certified HIT

Certification supports clinician engagement in clinical practice improvement and care coordination activities using health IT – including participation in CMS programs

**Patients**  
can access and send their health information electronically

**Clinicians & Hospitals**  
have tools for clinical processes, care coordination, and quality improvement

**Developers**  
can assure their customers that their product meets recognized standards and functionality

**2015 Edition Certification Criteria Categories**

### About the Certification Criteria

There are sixty 2015 Edition health IT certification criteria, which are organized into the eight categories specified on the wheel above. ONC-Authorized Certification Bodies (ONC-ACBs) certify health IT products that have been successfully tested by an ONC-Authorized Testing Laboratory (ONC-ATL) to the certification criteria. These products are then listed on the Certified Health IT Product List (CHPL). We encourage clinicians to work with their health IT developers to determine if their products include the right set of certified functionality to support their practices and patients.

[Learn More](#)

[2015 Edition Final Rule](#)

# Conditions and Maintenance of Certification

## The 21st Century Cures Act (Section 4002) requires the Secretary of HHS to establish Conditions and Maintenance of Certification requirements for the ONC Health IT Certification Program

The Conditions and Maintenance of Certification express initial requirements and ongoing requirements for health IT developers and their certified Health IT Module(s).

Any noncompliance with the proposed Conditions and Maintenance of Certification requirements would be subject to ONC direct review, corrective action, and enforcement procedures under the ONC Health IT Certification Program.

There are seven Conditions of Certification with accompanying Maintenance of Certification Requirements. They are:

1. **Information Blocking**
2. **Assurances**
3. **Attestations**
4. **Communications**
5. **Real World Testing**
6. **Application Programming Interfaces (APIs)**
7. *(Future) Electronic Health Record (EHR) Reporting Criteria Submission*

# Example Certification Criteria in 42 CFR 170.315



## Clinical Processes & Care Coordination

### Criteria:

- CPOE
- Demographics
- CDS
- Transition of Care
- CIRI
- eRx
- Care Plan



## Patient Engagement Criteria:

- View, Download, Transmit
- Secure Messaging
- Patient Health Information Capture



## Privacy & Security Criteria:

- Authentication, Access Control, and Authorization
- End-user Device Encryption
- Audit report(s)



## Public Health Criteria:

- Immunization Registries
- Syndromic Surveillance
- Electronic Case Reporting

For more info, check out: <https://www.healthit.gov/topic/certification-ehrs/2015-edition-test-method>

# Standardized Application Programming Interface (API) for Patient and Population Services – 170.315(g)(10)

- Established a new API certification criterion that requires health IT developers to support standardized APIs for single patient and population services.
- Certification criterion is limited to API-enabled “read” services using the HL7® Fast Healthcare Interoperability Resources (FHIR) Release 4 standard, **namely FHIR Release 4.0.1**
- The use of the FHIR standard and a set of implementation specifications provides known technical requirements against which third-party apps can be developed.
  - App registration, Authentication, Patient authorization & revocation, Token Introspection, etc.

## Supports two types of API-enabled services:

- » Services for which a **single patient’s data** is the focus
- » Services for which **multiple patients’ data** are the focus



# US Core Data for Interoperability v3



<b>Allergies and Intolerances</b> <ul style="list-style-type: none"> <li>Substance (Medication)</li> <li>Substance (Drug Class)</li> <li>Reaction</li> </ul>	<b>Clinical Tests</b> <ul style="list-style-type: none"> <li>Clinical Test</li> <li>Clinical Test Result/Report</li> </ul>	<b>Health Status/ Assessments</b> ★★ <ul style="list-style-type: none"> <li>Health Concerns →</li> <li>Functional Status ★</li> <li>Disability Status ★</li> <li>Mental Function ★</li> <li>Pregnancy Status ★</li> <li>Smoking Status →</li> </ul>	<b>Patient Demographics/ Information</b> ★★ <ul style="list-style-type: none"> <li>First Name</li> <li>Last Name</li> <li>Middle Name (Including middle initial)</li> <li>Name Suffix ★★</li> <li>Previous Name</li> <li>Date of Birth</li> <li>Date of Death ★</li> <li>Race</li> <li>Ethnicity</li> <li>Tribal Affiliation ★</li> <li>Sex ★★</li> <li>Sexual Orientation</li> <li>Gender Identity</li> <li>Preferred Language</li> <li>Current Address</li> <li>Previous Address</li> <li>Phone Number</li> <li>Phone Number Type</li> <li>Email Address</li> <li>Related Person's Name ★</li> <li>Related Person's Relationship ★</li> <li>Occupation ★</li> <li>Occupation Industry ★</li> </ul>	<b>Procedures</b> <ul style="list-style-type: none"> <li>Procedures</li> <li>SDOH Interventions</li> <li>Reason for Referral ★</li> </ul>
<b>Assessment and Plan of Treatment</b> <ul style="list-style-type: none"> <li>Assessment and Plan of Treatment</li> <li>SDOH Assessment</li> </ul>	<b>Diagnostic Imaging</b> <ul style="list-style-type: none"> <li>Diagnostic Imaging Test</li> <li>Diagnostic Imaging Report</li> </ul>			<b>Provenance</b> <ul style="list-style-type: none"> <li>Author Organization</li> <li>Author Time Stamp</li> </ul>
<b>Care Team Member(s)</b> <ul style="list-style-type: none"> <li>Care Team Member Name</li> <li>Care Team Member Identifier</li> <li>Care Team Member Role</li> <li>Care Team Member Location</li> <li>Care Team Member Telecom</li> </ul>	<b>Encounter Information</b> <ul style="list-style-type: none"> <li>Encounter Type</li> <li>Encounter Diagnosis</li> <li>Encounter Time</li> <li>Encounter Location</li> <li>Encounter Disposition</li> </ul>	<b>Immunizations</b> <ul style="list-style-type: none"> <li>Immunizations</li> </ul>		<b>Unique Device Identifier(s) for a Patient's Implantable Device(s)</b> <ul style="list-style-type: none"> <li>Unique Device Identifier(s) for a patient's implantable device(s)</li> </ul>
<b>Clinical Notes</b> <ul style="list-style-type: none"> <li>Consultation Note</li> <li>Discharge Summary Note</li> <li>History &amp; Physical</li> <li>Procedure Note</li> <li>Progress Note</li> </ul>	<b>Goals</b> <ul style="list-style-type: none"> <li>Patient Goals</li> <li>SDOH Goals</li> </ul>	<b>Laboratory</b> <ul style="list-style-type: none"> <li>Test</li> <li>Values/Results</li> <li>Specimen Type ★</li> <li>Result Status ★</li> </ul>		<b>Vital Signs</b> <ul style="list-style-type: none"> <li>Systolic blood pressure</li> <li>Diastolic blood pressure</li> <li>Heart Rate</li> <li>Respiratory rate</li> <li>Body temperature</li> <li>Body height</li> <li>Body weight</li> <li>Pulse oximetry</li> <li>Inhaled oxygen concentration</li> <li>BMI Percentile (2 - 20 years)</li> <li>Weight-for-length Percentile (Birth - 24 Months) ★★</li> <li>Head Occipital-frontal Circumference Percentile (Birth - 36 Months)</li> </ul>
	<b>Health Insurance Information</b> ★ <ul style="list-style-type: none"> <li>Coverage Status ★</li> <li>Coverage Type ★</li> <li>Relationship to Subscriber ★</li> <li>Member Identifier ★</li> <li>Subscriber Identifier ★</li> <li>Group Number ★</li> <li>Payer Identifier ★</li> </ul>	<b>Medications</b> <ul style="list-style-type: none"> <li>Medications ★</li> <li>Dose ★</li> <li>Dose Units of Measure ★</li> <li>Indication ★</li> <li>Fill Status ★</li> </ul>	<b>Problems</b> <ul style="list-style-type: none"> <li>Problems</li> <li>SDOH Problems/Health Concerns</li> <li>Date of Diagnosis</li> <li>Date of Resolution</li> </ul>	



# USCDI Evolution Supports 21st Century Cures Act

- USCDI v1 is required by Cures Act Final Rule and added four data elements: clinical notes, provenance, pediatric vital signs, and address
- USCDI v2 added three data classes and data elements in support of advancing health equity (SOGI and SDOH)
- Draft USCDI v3 addressed equity, disparity, and public health data interoperability. Proposed two data classes (Health Insurance Information and Health Status) and 20 data elements
- USCDI v3 adopts draft USCDI v3 and four additional elements in the Medication data class ( ≈ 80 data elements)

USCDI v1 Summary of Data Classes and Data Elements		USCDI v2 Summary of Data Classes and Data Elements		USCDI v3 Summary of Data Classes and Data Elements		
<b>Allergies and Intolerances</b> <ul style="list-style-type: none"> <li>Substance (Medication)</li> <li>Substance (Drug Class)</li> <li>Reaction</li> </ul>	<b>Laboratory</b> <ul style="list-style-type: none"> <li>Tests</li> <li>Values/Results</li> </ul>	<b>Allergies and Intolerances</b> <ul style="list-style-type: none"> <li>Substance (Medication)</li> <li>Substance (Drug Class)</li> <li>Reaction</li> </ul>	<b>Goals</b> <ul style="list-style-type: none"> <li>Patient Goals</li> <li>SDOH Goals</li> </ul>	<b>Allergies and Intolerances</b> <ul style="list-style-type: none"> <li>Substance (Medication)</li> <li>Substance (Drug Class)</li> <li>Reaction</li> </ul>	<b>Health Status/Assessments</b> <ul style="list-style-type: none"> <li>Health Concerns</li> <li>Functional Status</li> <li>Disability Status</li> <li>Mental/Cognitive Status</li> <li>Pregnancy Status</li> <li>Smoking Status</li> </ul>	<b>Problems</b> <ul style="list-style-type: none"> <li>Problems</li> <li>SDOH Problems/Health Concerns</li> <li>Date of Diagnosis</li> <li>Date of Resolution</li> </ul>
<b>Assessment and Plan of Treatment</b> <ul style="list-style-type: none"> <li>Assessment and Plan of Treatment</li> </ul>	<b>Medications</b> <ul style="list-style-type: none"> <li>Medications</li> </ul>	<b>Assessment and Plan of Treatment</b> <ul style="list-style-type: none"> <li>Assessment and Plan of Treatment</li> <li>SDOH Assessment</li> </ul>	<b>Health Concerns</b> <ul style="list-style-type: none"> <li>Health Concerns</li> </ul>	<b>Assessment and Plan of Treatment</b> <ul style="list-style-type: none"> <li>Assessment and Plan of Treatment</li> <li>SDOH Assessment</li> </ul>	<b>Immunizations</b> <ul style="list-style-type: none"> <li>Immunizations</li> </ul>	<b>Procedures</b> <ul style="list-style-type: none"> <li>Procedures</li> <li>SDOH Interventions</li> <li>Reason for Referral</li> </ul>
<b>Care Team Members</b> <ul style="list-style-type: none"> <li>Care Team Members</li> </ul>	<b>Patient Demographics</b> <ul style="list-style-type: none"> <li>First Name</li> <li>Last Name</li> <li>Previous Name</li> <li>Middle Name (including Middle Initial)</li> <li>Suffix</li> <li>Birth Sex</li> <li>Date of Birth</li> <li>Race</li> <li>Ethnicity</li> <li>Preferred Language</li> <li>Current Address</li> <li>Previous Address</li> <li>Phone Number</li> <li>Phone Number Type</li> <li>Email Address</li> </ul>	<b>Care Team Member(s)</b> <ul style="list-style-type: none"> <li>Care Team Member Name</li> <li>Care Team Member Identifier</li> <li>Care Team Member Role</li> <li>Care Team Member Location</li> <li>Care Team Member Telecom</li> </ul>	<b>Laboratory</b> <ul style="list-style-type: none"> <li>Tests</li> <li>Values/Results</li> </ul>	<b>Care Team Member(s)</b> <ul style="list-style-type: none"> <li>Care Team Member Name</li> <li>Care Team Member Identifier</li> <li>Care Team Member Role</li> <li>Care Team Member Location</li> <li>Care Team Member Telecom</li> </ul>	<b>Laboratory</b> <ul style="list-style-type: none"> <li>Tests</li> <li>Values/Results</li> <li>Specimen Type</li> <li>Result Status</li> </ul>	<b>Provenance</b> <ul style="list-style-type: none"> <li>Author Organization</li> <li>Author Time Stamp</li> </ul>
<b>Clinical Notes</b> <ul style="list-style-type: none"> <li>Consultation Note</li> <li>Discharge Summary Note</li> <li>History &amp; Physical</li> <li>Imaging Narrative</li> <li>Laboratory Report Narrative</li> <li>Pathology Report Narrative</li> <li>Procedure Note</li> <li>Progress Note</li> </ul>	<b>Problems</b> <ul style="list-style-type: none"> <li>Problems</li> </ul>	<b>Clinical Notes</b> <ul style="list-style-type: none"> <li>Consultation Note</li> <li>Discharge Summary Note</li> <li>History &amp; Physical</li> <li>Procedure Note</li> <li>Progress Note</li> </ul>	<b>Medications</b> <ul style="list-style-type: none"> <li>Medications</li> </ul>	<b>Clinical Notes</b> <ul style="list-style-type: none"> <li>Consultation Note</li> <li>Discharge Summary Note</li> <li>History &amp; Physical</li> <li>Procedure Note</li> <li>Progress Note</li> </ul>	<b>Medications</b> <ul style="list-style-type: none"> <li>Medications</li> <li>Dose</li> <li>Dose Unit of Measure</li> <li>Indication</li> <li>Fill Status</li> </ul>	<b>Unique Device Identifier(s) for a Patient's Implantable Device(s)</b> <ul style="list-style-type: none"> <li>Unique Device Identifier(s) for a patient's implantable device(s)</li> </ul>
<b>Goals</b> <ul style="list-style-type: none"> <li>Patient Goals</li> </ul>	<b>Procedures</b> <ul style="list-style-type: none"> <li>Procedures</li> </ul>	<b>Clinical Tests</b> <ul style="list-style-type: none"> <li>Clinical Test</li> <li>Clinical Test Result/Report</li> </ul>	<b>Patient Demographics</b> <ul style="list-style-type: none"> <li>First Name</li> <li>Last Name</li> <li>Previous Name</li> <li>Middle Name (including Middle Initial)</li> <li>Suffix</li> <li>Sex (Assigned at Birth)</li> <li>Sexual Orientation</li> <li>Gender Identity</li> <li>Date of Birth</li> <li>Race</li> <li>Ethnicity</li> <li>Preferred Language</li> <li>Current Address</li> <li>Previous Address</li> <li>Phone Number</li> <li>Phone Number Type</li> <li>Email Address</li> </ul>	<b>Clinical Tests</b> <ul style="list-style-type: none"> <li>Clinical Test</li> <li>Clinical Test Result/Report</li> </ul>	<b>Medications</b> <ul style="list-style-type: none"> <li>Medications</li> <li>Dose</li> <li>Dose Unit of Measure</li> <li>Indication</li> <li>Fill Status</li> </ul>	<b>Vital Signs</b> <ul style="list-style-type: none"> <li>Systolic Blood Pressure</li> <li>Diastolic Blood Pressure</li> <li>Heart Rate</li> <li>Respiratory Rate</li> <li>Body Temperature</li> <li>Body Height</li> <li>Body Weight</li> <li>Pulse Oximetry</li> <li>Inhaled Oxygen Concentration</li> <li>BMI Percentile (2 - 20 years)</li> <li>Weight-for-length Percentile (Birth - 24 Months)</li> <li>Head Occipital-frontal Circumference Percentile (Birth- 36 Months)</li> </ul>
<b>Health Concerns</b> <ul style="list-style-type: none"> <li>Health Concerns</li> </ul>	<b>Provenance</b> <ul style="list-style-type: none"> <li>Author Time Stamp</li> <li>Author Organization</li> </ul>	<b>Diagnostic Imaging</b> <ul style="list-style-type: none"> <li>Diagnostic Imaging Test</li> <li>Diagnostic Imaging Report</li> </ul>	<b>Encounter Information</b> <ul style="list-style-type: none"> <li>Encounter Type</li> <li>Encounter Diagnosis</li> <li>Encounter Time</li> <li>Encounter Location</li> <li>Encounter Disposition</li> </ul>	<b>Diagnostic Imaging</b> <ul style="list-style-type: none"> <li>Diagnostic Imaging Test</li> <li>Diagnostic Imaging Report</li> </ul>	<b>Patient Demographics/Information</b> <ul style="list-style-type: none"> <li>First Name</li> <li>Last Name</li> <li>Middle Name (Including middle initial)</li> <li>Name Suffix</li> <li>Previous Name</li> <li>Date of Birth</li> <li>Date of Death</li> <li>Race</li> <li>Ethnicity</li> <li>Tribal Affiliation</li> <li>Sex</li> <li>Sexual Orientation</li> <li>Gender Identity</li> <li>Preferred Language</li> <li>Current Address</li> <li>Previous Address</li> <li>Phone Number</li> <li>Phone Number Type</li> <li>Email Address</li> <li>Related Person's Name</li> <li>Related Person's Relationship</li> <li>Occupation</li> <li>Occupation Industry</li> </ul>	<b>Encounter Information</b> <ul style="list-style-type: none"> <li>Encounter Type</li> <li>Encounter Diagnosis</li> <li>Encounter Time</li> <li>Encounter Location</li> <li>Encounter Disposition</li> </ul>
<b>Immunizations</b> <ul style="list-style-type: none"> <li>Immunizations</li> </ul>		<b>Encounter Information</b> <ul style="list-style-type: none"> <li>Encounter Type</li> <li>Encounter Diagnosis</li> <li>Encounter Time</li> <li>Encounter Location</li> <li>Encounter Disposition</li> </ul>	<b>Problems</b> <ul style="list-style-type: none"> <li>Problems</li> <li>SDOH Problems/Health Concerns</li> <li>Date of Diagnosis</li> <li>Date of Resolution</li> </ul>	<b>Goals</b> <ul style="list-style-type: none"> <li>Patient Goals</li> <li>SDOH Goals</li> </ul>		
				<b>Health Insurance Information</b> <ul style="list-style-type: none"> <li>Coverage Status</li> <li>Coverage Type</li> <li>Relationship to Subscriber</li> <li>Member Identifier</li> <li>Subscriber Identifier</li> <li>Group Number</li> <li>Payer Identifier</li> </ul>		